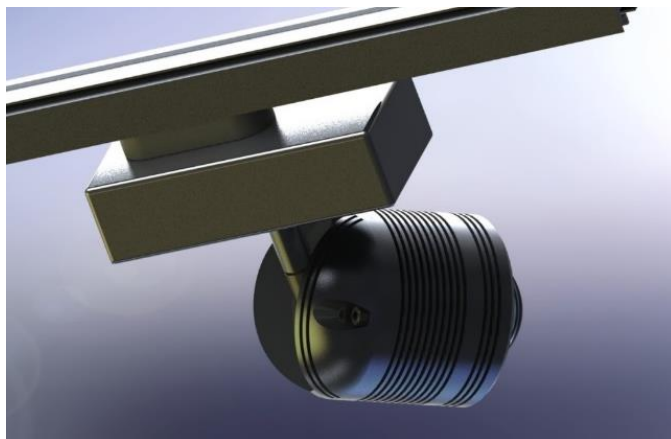
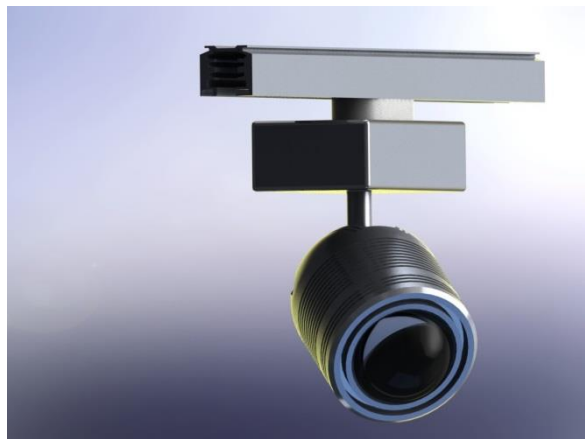


High quality high CRI LED spotlight



Equipment:

This LED spotlight can alternatively be supplied as tracklight (spot or flood) or for direct wall or ceiling mounting.

Construction:

Housing: aluminum

Optics: Aspherical lens, rear structured

Control / functions:

- smart lamps remote control SLF T10
- On - Off function
- dimming function with adjustable speed
- Maximum 6 luminaire groups controlled
- can be integrated into any existing DMX system

Technical specifications:

Light head: 150 mm long with 100 mm diameter

Solid aluminum turned and milled parts

Power consumption: 32 watts

Luminous flux: 3400 lumens

CRI: > 90

Beams : 25° - 60°

Light color: 3000K - 5000K